

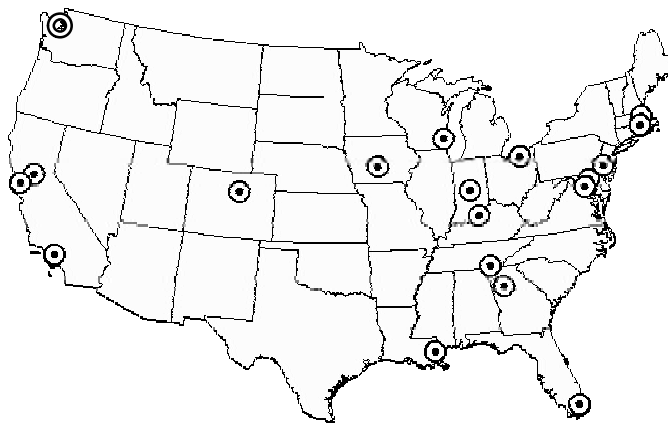
## USING INFORMATION FOR COMMUNITY CHANGE

### *The National Neighborhood Indicators Partnership (NNIP)*

Peter Tatian, The Urban Institute  
*AMERICAN PLANNING ASSOCIATION  
NATIONAL PLANNING CONFERENCE  
APRIL 1, 2003*

### *NNIP Partner Cities*

Atlanta  
Baltimore  
Boston  
Camden  
Chattanooga  
Cleveland  
Denver  
Des Moines  
Indianapolis  
Louisville  
Los Angeles  
Miami  
Milwaukee  
New Orleans  
Oakland  
Philadelphia  
Providence  
Sacramento  
Seattle  
Washington, DC



National Neighborhood Indicator Partnership (NNIP)

## ***NNIP***

- ✍ **Collaborative effort - Urban Institute and local partners in nineteen cities**
- ✍ **Partners operate information systems**
  - *Recurrently updated neighborhood data*
  - *Multiple topics and data sources*
- ✍ **Success required three kinds of innovations**
  1. *Technological*
  2. *Institutional*
  3. *Using information for change*



National Neighborhood Indicator Partnership (NNIP)

## ***1. THE TECHNOLOGY***

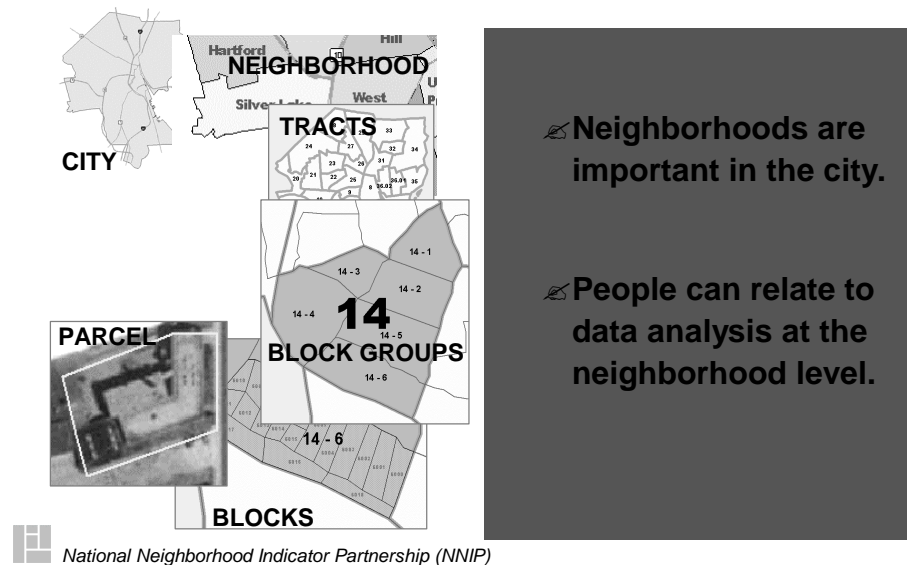
- ✍ **Systems now possible due to**
  - *Powerful PCs, dramatic cost reduction*
  - *Automation of administrative records*
  - *GIS software (address matching/Tiger files)*



National Neighborhood Indicator Partnership (NNIP)

## Geography Matters

## Linking people information with place information



## 2. THE INSTITUTIONS

 **NNIP Partners – mostly nonprofit, non-governmental:**

- **Government agency (Miami, Seattle)**
- **Community foundations (Boston, Denver)**
- **University-based centers (Atlanta, Cleveland, Los Angeles)**
- **United Way based groups (Des Moines, Indianapolis, Louisville, New Orleans)**
- **Nonprofit intermediaries (Chattanooga, Milwaukee, Oakland, Philadelphia, Providence, Sacramento, Washington)**
- **Local Coalitions (Baltimore, Camden)**

 **All work by collaborating**

- **With public agencies, nonprofits, businesses**

- ✍ **Offer a one-stop-shop for data**
  - *Tremendous efficiency for users*
  - *Benefits of social infrastructure*
- ✍ **Positioned to maintain trust of data providers and users over long term**
  - *Not linked to short term political interest*
  - *Care with cleaning and release of data*
- ✍ **Are, or can be, locally self sustaining**
  - *Fee/project income can cover majority of cost*
  - *But some local general support required*



National Neighborhood Indicator Partnership (NNIP)

### **3. INFORMATION FOR CHANGE**

- ✍ **Democratizing Information**
  - *Facilitating the direct use of data by stakeholders - not writing the reports yourself*
- ✍ **Primary mission — strengthening, empowering low-income neighborhoods**
  - *Partners work for many clients but influence of this theme evident in all their work*
- ✍ **Information as a bridge for collaboration**



National Neighborhood Indicator Partnership (NNIP)

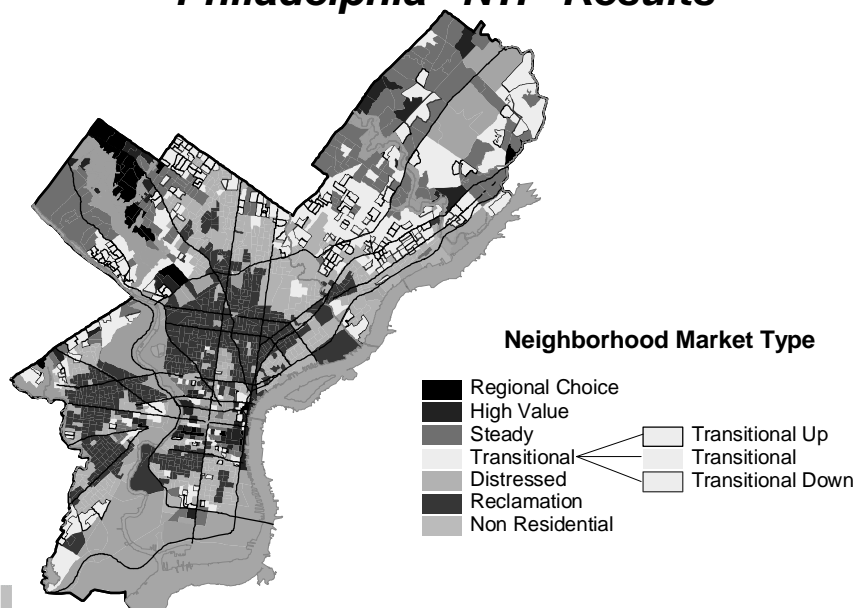
## ***Applications: Philadelphia Neighborhood Transformation Initiative***

- ✍ **Data driven, citywide strategic framework for housing and neighborhood development**
- ***Identified market types by cluster analysis of key block-group level indicators***
- ***An objective lens through which development decisions are made***
- ***\$295 million bond and agency realignment***
- ***Demolition of dangerous properties and encapsulation for future rehabilitation***



National Neighborhood Indicator Partnership (NNIP)

## ***Philadelphia “NTI” Results***



National Neighborhood Indicator Partnership (NNIP)

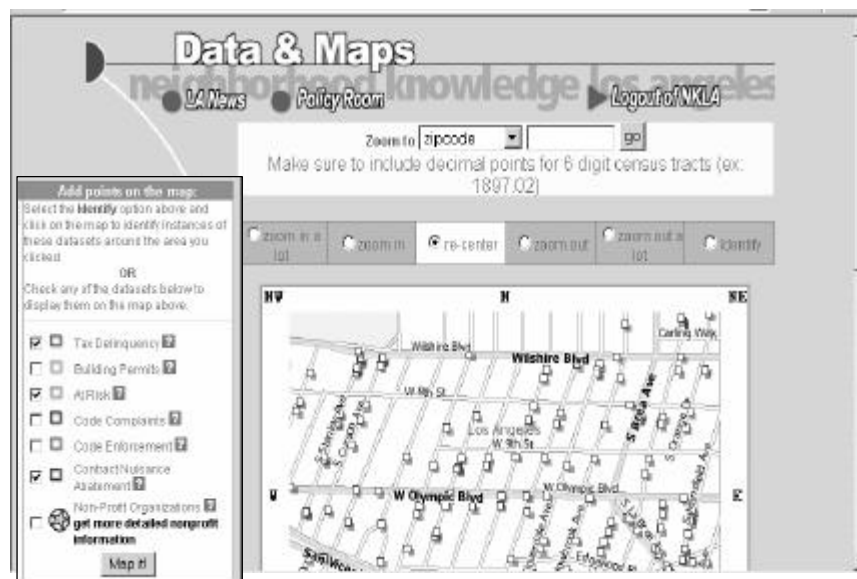
## ***Applications: Los Angeles code enforcement system reform***

- ✍ **NNIP Partner data on early warnings of abandonment and neighborhood decline**
  - ***Online parcel data: e.g. tax arrears, unpaid utility bills, code violations***
- ✍ **City saw NKLA as basis for improving code enforcement system**
  - ***System now has data on complaints, inspections, and repairs***
  - ***Moved from complaint-based system to regular inspection of multi-family units every 3 years***



National Neighborhood Indicator Partnership (NNIP)

## ***NKLA site: <http://nkla.ucla.edu>***



National Neighborhood Indicator Partnership (NNIP)

## ***Applications: Cleveland welfare to work analysis***

- ✍ **Regional mapping of spatial mismatch**
  - *Vulnerable welfare recipients*
  - *Entry level jobs*
- ✍ **Got transit & day care people to the table**
  - *Could simulate impacts of route changes on travel times*
  - *State put in \$10 M; national recognition*

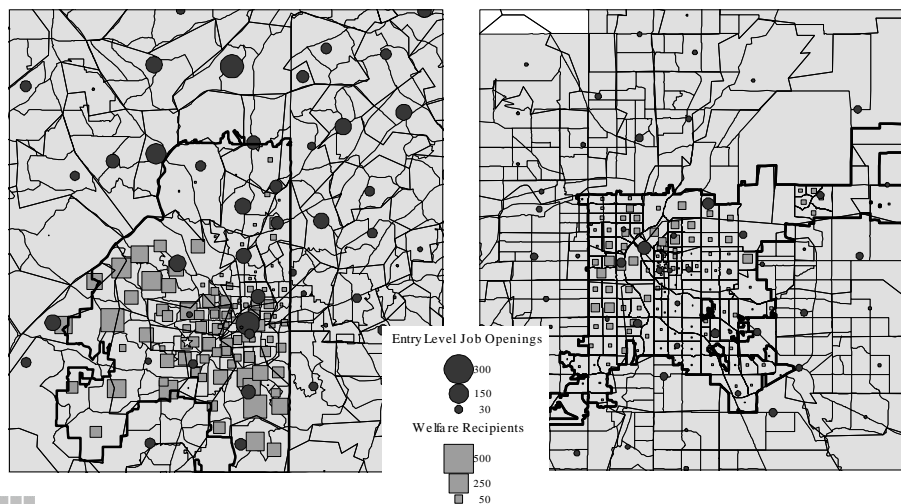


National Neighborhood Indicator Partnership (NNIP)

## ***Spatial patterns of welfare & jobs***

Atlanta

Denver



National Neighborhood Indicator Partnership (NNIP)

## ***WORK OF THE PARTNERSHIP***

### **Building tools around innovations**

- *Guidebooks on all aspects of the work of local partners: technical, institutional, applications*

### **Cross site studies to learn about the dynamics of neighborhood change**

- *Previous topics: Welfare and Health*
- *Future topics: Prisoner re-entry, equitable development, and more in-depth health*



National Neighborhood Indicator Partnership (NNIP)

### **National Neighborhood Data System**

- *Consistently defined data from partners*
- *National data sets with neighborhood data*

### **Many forms of dissemination**

- *NNIP-News email list-serve*
- *NNIP web site*
- *Major conferences (1998, 2000, 2001)*
- *Presentations at other conferences/mtgs*

### **Technical assistance to help groups in new cities get started 11 cities so far**



National Neighborhood Indicator Partnership (NNIP)



***For more information on NNIP***

✍ **Web site:** [www.urban.org/nnip](http://www.urban.org/nnip)

✍ **Email:** [nnip@ui.urban.org](mailto:nnip@ui.urban.org)

✍ **Mailing address:**

***Peter Tatian***

***National Neighborhood Indicators Partnership***

***c/o The Urban Institute***

***2100 M Street NW***

***Washington, DC 20037***



*National Neighborhood Indicator Partnership (NNIP)*